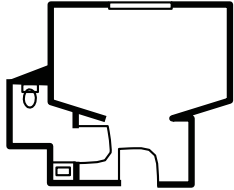
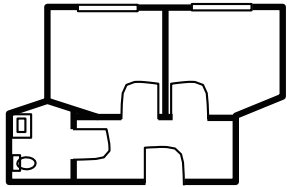


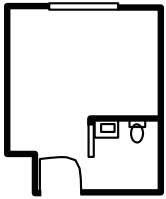
Available Floor Plans



Double occupancy



Semi-private room



Private room

For more info or to schedule a tour, please contact:

General
(608) 406-3939
Fax: (608) 406-3914

The Lighthouse
(608) 406-3917
Fax: (608) 406-3914

BETHANY
LUTHERAN HOMES
A GUNDERSEN HEALTH SYSTEM AFFILIATE
Great People . . . Great Care!



Bethany Riverside
& The Lighthouse

2575 South 7th Street, La Crosse, WI 54601
www.bethanylutheranhomes.org

Bethany Riverside, a Skilled Nursing Facility

Bethany Riverside's team of dedicated staff is ready to work closely with the individual needs of our residents. Bethany Riverside offers short-term recuperative care, as well as extended care for persons needing 24-hour skilled nursing services. Beautifully situated along the Mississippi River, this home-like, 123-bed skilled nursing community is conveniently located near Gundersen Health System in La Crosse.

Services and Programs:

- Clinically complex nursing services, including enteral feeding, IV antibiotics, and wound care
- Comprehensive rehabilitation services including physical therapy, occupational therapy, and speech/language therapy
- Pastoral care
- Recreational therapy
- Social services

Amenities:

- Areas for comfortable private visits, family gatherings, and dining opportunities
- Faith and Life Center for worship and activities
- Rehab rooms furnished with flat screen TVs and recliners
- Serenity Room for end of life comfort care
- Spacious landscaped courtyard and grounds
- Variety of room sizes, including semi-private and private rooms for a fee
- Facility adjoins The Willows, an assisted living community
- Complimentary cable TV and local telephone service

Fee based:

- Transportation to and from medical appointments, subject to public transportation availability in the La Crosse/Onalaska area
- Beauty/Barber salon
- Fees may apply for large gatherings
- Fees for private rooms

Medicare and Medicaid Certified

The Lighthouse, Memory Care within Bethany Riverside



The Lighthouse offers persons in the mid to late stages of dementia an option for skilled nursing care in a holistic environment.

The Lighthouse views each resident as a total person with specialized needs for socialization, activity, emotional expression, nutrition, religious or spiritual opportunities while providing skilled nursing care.

The Lighthouse Philosophy is based on activity-focused care. Caregivers include all members of the interdisciplinary team. All interactions, big and small, provide an opportunity to create moments of joy.

Special features include:

- A secure setting promoting freedom of movement
- A great room for indoor activities, dining, and entertainment
- Opportunities for exercise, musical entertainment, arts, crafts, cooking, and baking
- A large, secured outdoor area with a screened-in gazebo offering opportunities for gardening, visiting, relaxing, and small group discussions
- An environment addressing therapeutic levels of stimulation
- A proactive approach to the challenges of dementia care, including resident-specific activities, essential oils, massage, Music and Memory™, and pet-assisted therapy
- A structured, yet flexible program designed to meet the needs of the resident as they occur
- Weekly church services
- A pet-friendly atmosphere, including a live-in cat on each of The Lighthouse units (visiting pets are also welcome)
- Staff who have been specially trained to work with the population living with dementia
- Opportunities for family fellowship, support, and education